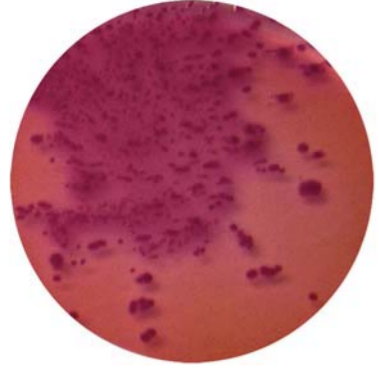


Isolation & Identification Media

Enterobacteria



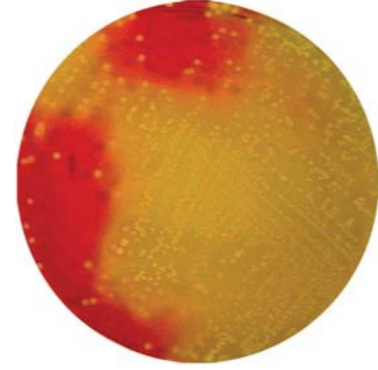
Escherichia coli ATCC 25922
VRBG AGAR (CAT. 1092)
For the cultivation and enumeration of *Enterobacteria* in water, foods and other materials.



Salmonella typhimurium ATCC 14028
HEKTOEN ENTERIC AGAR (CAT. 1030)
For the isolation and differentiation of Gram-negative enteric bacteria.



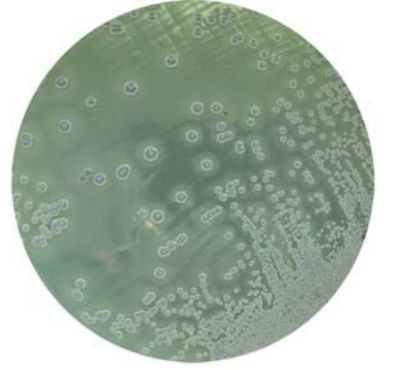
Salmonella typhimurium ATCC 14028
XLD AGAR (XYLOSE LYSINE DESOXYCHOLATE AGAR) (EUROPEAN PHARMACOPOEIA) (CAT. 1080)
For the isolation of enteropathogenic bacteria, especially from the genus of *Shigella* and *Salmonella*.



Staphylococcus

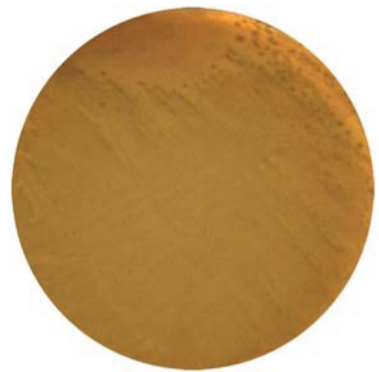


Staphylococcus aureus ATCC 25923
TELLURITE EGG YOLK EMULSION (CAT. 5129)

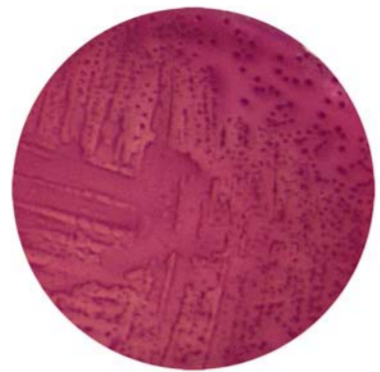


Staphylococcus aureus ATCC 25923
RPF SUPPLEMENT (CAT. 6024)
BAIRD PARKER AGAR BASE (ISO 6888:1999) (CAT. 1319)
For the selective isolation of coagulase-positive *Staphylococcus* in foods.

Coliforms



Salmonella typhimurium ATCC 14028
VRBL AGAR (CAT. 1093)
Selective medium for the detection and enumeration of *Coliforms* in dairy products, water and foods.



Escherichia coli ATCC 25922



Non lactose fermenters

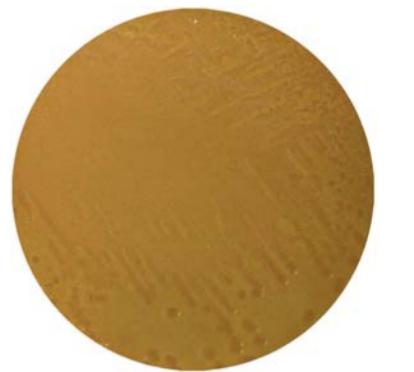


Lactose fermenters

TTC CHAPMAN AGAR (ISO 9308-1:2000) (CAT. 1076)
For the enumeration of *Coliforms* in drinking waters by membrane-filtration technique.



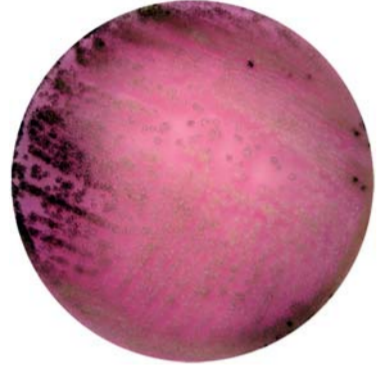
Escherichia coli ATCC 25922



Escherichia coli O157:h7

MACCONKEY AGAR WITH SORBITOL (CAT. 1099)
Selective and differential medium for *Escherichia coli* O157:h7.

Fungi & Yeasts



Aspergillus Niger ATCC 1015
ROSE BENGAL AGAR + CHLORAMPHENICOL (CAT. 1081)
For the cultivation and selective isolation of yeasts and molds.



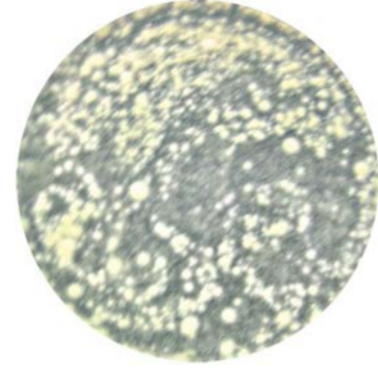
Aspergillus Niger ATCC 1015

POTATO DEXTROSE AGAR (CAT. 1022)
For the identification, cultivation and enumeration of yeasts and molds in foods.



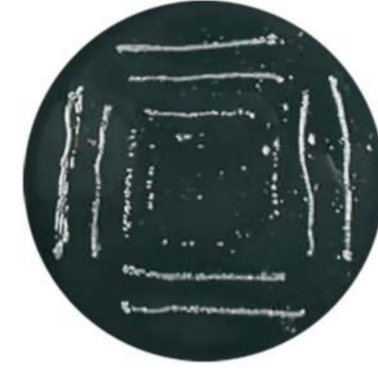
Candida albicans ATCC 10231

CHLORAMPHENICOL AGAR (CAT. 1301)
Selective medium for the isolation and enumeration of molds in milk and dairy products.



Aspergillus Niger ATCC 1015

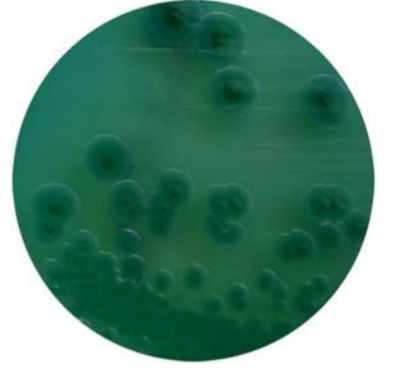
Legionella



Legionella ATCC 33153

LEGIONELLA BCYE/GVPC AGAR (CAT. 1311)
Selective medium for the isolation and cultivation of *Legionella*.

Aeromonas

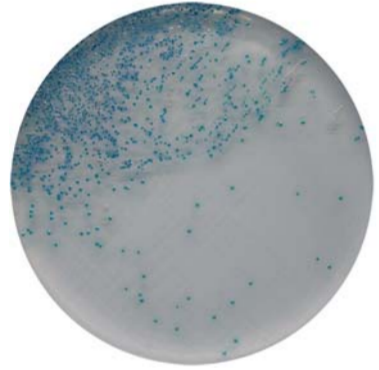


Aeromonas Hydrophila ATCC 7966

AEROMONAS AGAR (RYAN) (CAT. 1370)
For the isolation of *Aeromonas hydrophila* in clinical and environmental samples when Ampiciline is used as a selective supplement.

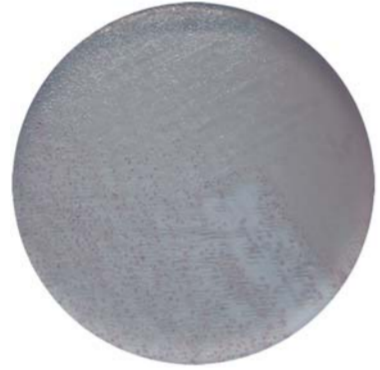
Chromogenic Media

E.coli



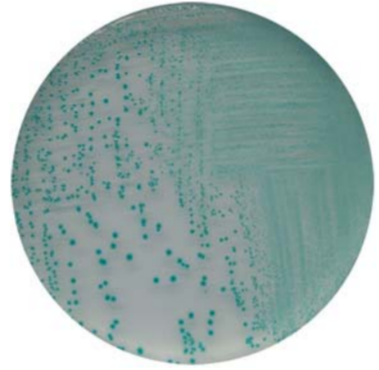
Escherichia coli ATCC 25922

E.COLI-COLIFORMS CHROMOGENIC MEDIUM (CAT. 1340)
Selective medium for the simultaneous detection of *Escherichia coli* and other *Coliforms* in water and food samples.



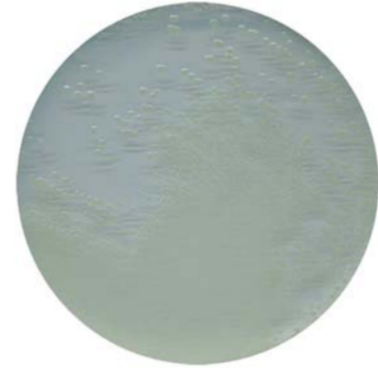
Enterobacter aerogenes ATCC 13048

TBX



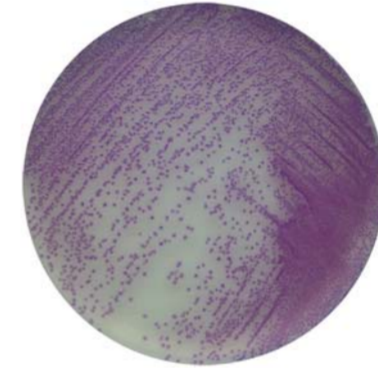
Escherichia coli ATCC 25922

TBX CHROMOGENIC AGAR (TRYPTONE BILE X-GLUCURONIDE) (CAT. 1151)
Selective medium for the detection and enumeration of *Escherichia coli* in foods.



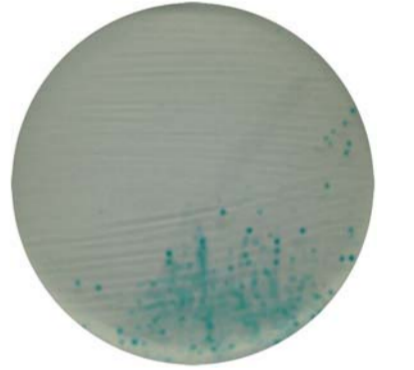
Enterobacter aerogenes ATCC 13048

Salmonella



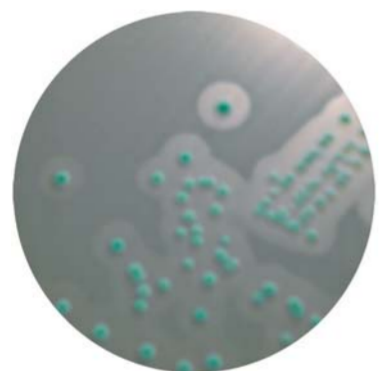
Salmonella enteritidis ATCC 13076

SALMONELLA CHROMOGENIC AGAR (CAT. 1122)
Selective medium for the isolation of *Salmonella* in clinical samples, foods and waters.

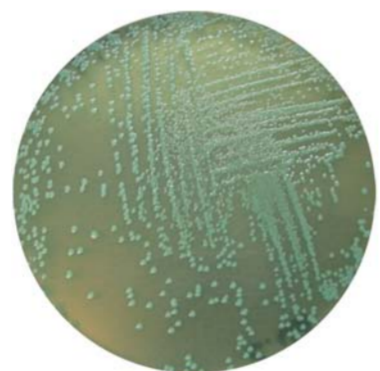


Escherichia coli ATCC 25922

Listeria



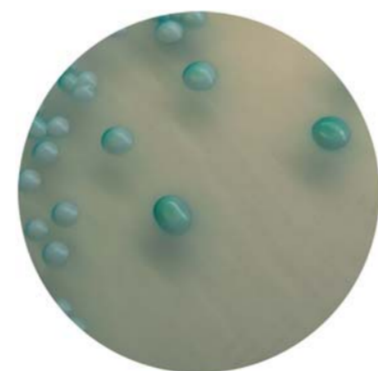
Listeria monocytogenes ATCC 19111



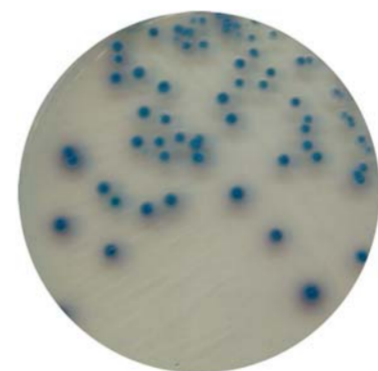
Listeria innocua ATCC 33090

LISTERIA CHROMOGENIC AGAR (ISO 11290:2004) (CAT. 1345)
Selective medium for the direct detection and enumeration of *Listeria monocytogenes*.

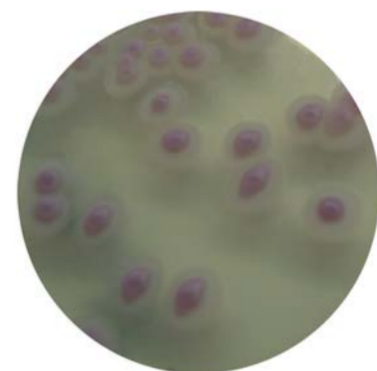
Candida



Candida albicans ATCC 10231



Candida tropicalis ATCC 1369



Candida krusei ATCC 34135

CANDIDA CHROMOGENIC AGAR (CAT. 1382)
Differential and selective medium for the isolation and quick identification of *Candida* species of clinical importance.

Other Products



Ingredients



Ready-to-use flasks



Ready-to-use tubes



Agaroses



Ready-to-use plates



Dip Slides (Pronacultures)



ESTABLISHED 1960



Micro & Molecular Biology

LABORATORIOS CONDA • C/La Forja, 9 • 28850 Torrejón de Ardoz MADRID

Phone +34 91 761 02 00 • Fax +34 91 656 82 28 • export@condalab.com • www.condalab.com

life science products because life is a great discovery