

Innovative Solutions for Drug Discovery and Life Sciences Research

Multi-mode detection systems

SpectraMax[®] i3 Platform



Most flexible; spectral absorbance, fluorescence, luminescence; western blot detection; user-upgradeable with 4 top cartridge positions and SpectraMax[®] MiniMax[™] 300 Imaging Cytometer on bottom

SpectraMax[®] Paradigm[®] Platform



Fast and sensitive, user-upgradeable with cartridges on top and bottom; monochromator-based absorbance; next-gen monochromator fluorescence, luminescence, FRET, TRF, FP, TR-FRET, HTRF, western blot, AlphaScreen; PathCheck[®] Technology, 96-, 384-, 1536-, 3456-well

FlexStation[®] 3 Reader



Tunable absorbance, fluorescence, FRET, TRF, FP, TR-FRET, HTRF, luminescence with automated fluid transfer for endpoint, flex and fast kinetics, 8- or 16-channel pipettor, sub-microliter pipetting

SpectraMax[®] M5/M5e Reader



Tunable absorbance, fluorescence, FRET, TRF, FP, TR-FRET, HTRF (M5e only), luminescence, triple-mode cuvette port, kinetics, spectral and well scanning, AutoPMT[™] and PathCheck[®] Technology

SpectraMax[®] M3/M4 Reader



Upgradeable platform; tunable absorbance, fluorescence, luminescence; TRF (M4 only), triple-mode cuvette port, kinetics, spectral and well scanning, AutoPMT[™] and PathCheck[®] Technology

SpectraMax[®] M2/M2e Reader



Tunable absorbance, fluorescence, dual-mode cuvette port, kinetics, spectral and well scanning, AutoPMT[™] and PathCheck[®] Technology

F5 System



Filter-based, 5 modes; absorbance, UV-Vis (230–650 nm); fluorescence, top-read (230–750 nm), bottom-read (300–650 nm); glow luminescence (400–750 nm); FP, TRF; temperature control, PathCheck[®] Technology, 96-, 384-, 1536-well

F3 System



Filter-based, 3 modes; absorbance, Vis (340–650 nm); fluorescence, top-read (340–650 nm); glow luminescence (400–650 nm); 96–384-well

Automation solution

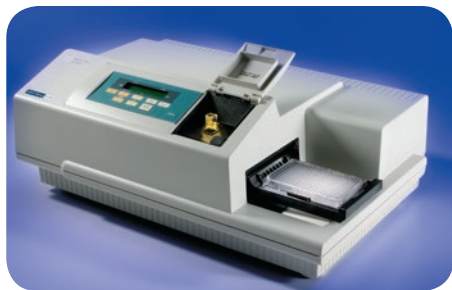
StakMax[®] Microplate Handler



Walk-away automation for select SpectraMax Microplate Readers and AquaMax 2000/4000 Washers, 50-plate capacity

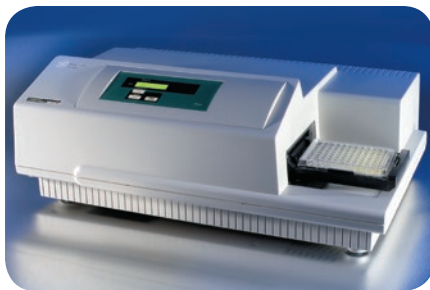
Absorbance single-mode detection systems

SpectraMax[®] 190 and Plus³⁸⁴ Readers



Tunable (UV/visible 190-850 nm, 1000 nm on Plus³⁸⁴) endpoint, kinetics, spectrum scanning, PathCheck[®] Technology, 96-well (384-well and cuvette port on Plus³⁸⁴)

VersaMax[™] and SpectraMax[®] 340PC³⁸⁴ Readers



Tunable (visible 340-850 nm), endpoint, kinetics, 96-well (spectrum scanning, PathCheck[®] Technology, 384-well on 340PC³⁸⁴), temp. control

EMax[®] and VMax[®] Readers



Filter-based (visible 405-750 nm) endpoint, 96-well (kinetics on VMax)

Fluorescence single-mode detection systems

Gemini[™] EM Reader



Tunable (250-850 nm), fluorescence, top- and bottom-read, cell-based assay, FRET

Gemini[™] XPS Reader



Tunable (250-850 nm Ex, 360-850 nm Em), fluorescence, top-read

SpectraMax[®] L Reader



Up to 6-times faster, > 9 orders of dynamic range, dual injection in both 96- and 384-well microplates, excellent sensitivity, Autorinse injectors, optional BRET configuration

Bioassay validation tools

SpectraTest[®] ABS1, FL1, and LM1 Validation Plates



Automated absorbance, fluorescence, and luminescence validation test plates, IQ/OQ tools and performance certification for GLP/cGMP

Multi-Mode Validation Plate for SpectraMax Paradigm and F3/F5 Systems



Automated all-in one testing for absorbance, fluorescence, luminescence, TRF, and FP

Low-volume assays

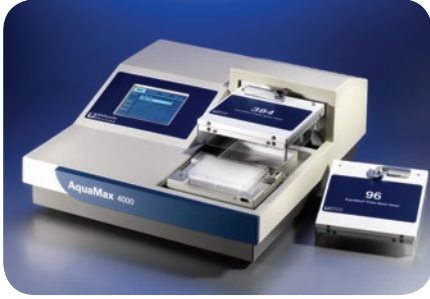
SpectraDrop[™] Micro-Volume Microplate



Highest throughput solution for low volume measurement available; assures uniform and reproducible analysis; accelerates sample preparation time; increases laboratory productivity of DNA, RNA, and protein samples as low 2 μ L

Microplate washers

AquaMax® Microplate Washers



Self-contained, touch screen, automatic washers with interchangeable 96- and 384-well wash heads; 96 and 384 microplate wash and cell washing, up to 4 fluid inputs, automated shutdown options, "One Touch" priming and cleaning protocols

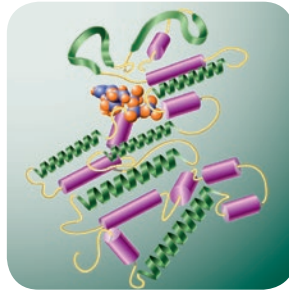
MultiWash III Microplate Washer



Low-cost 96-well microplate strip washer, user-changeable wash manifolds

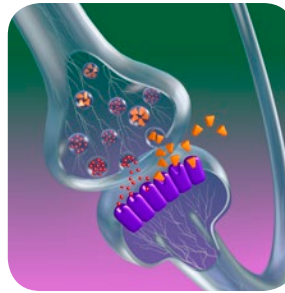
Microplate reagents and assay kits

Kinase, Phosphatase, PDE



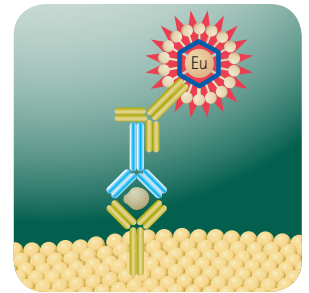
Homogeneous assays to measure kinases, phosphatases, and phosphodiesterases

Transporter



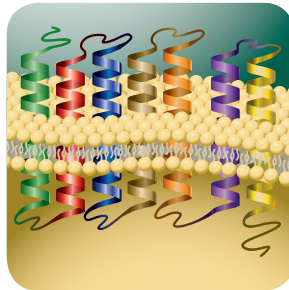
Live-cell kinetic assays to measure fatty acid and neurotransmitter uptake

Western Blot



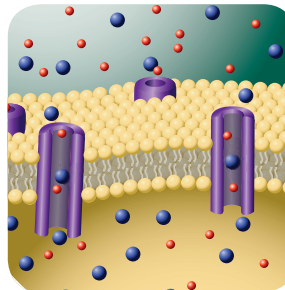
First western blot assay on a microplate reader

Calcium



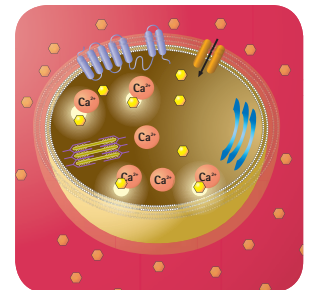
Live-cell assays to monitor calcium mobilization by GPCRs and ion channels

Membrane Potential



Cell-based assays to measure ion channel activity

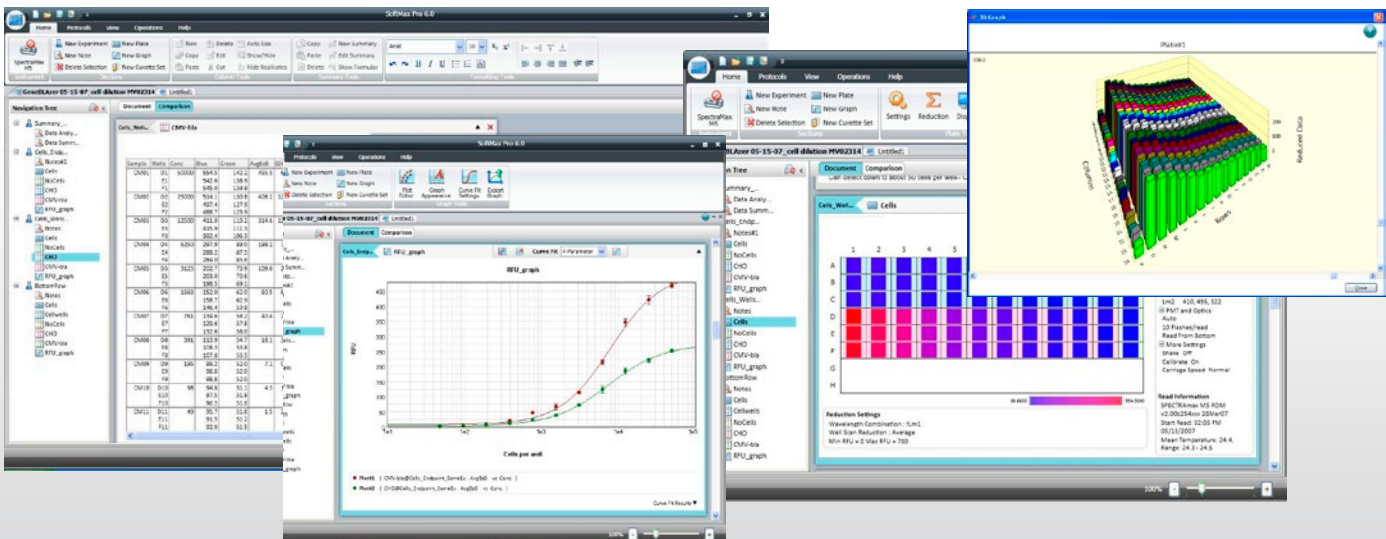
Toxicity



Cell-based assays to identify toxicity earlier

Microplate reader data acquisition and analysis software

SoftMax® Pro Software: the most powerful microplate analysis software



Custom calculations for EC₅₀, Z-factors, and bioassay analysis, including over 15 curve fits and built-in tests for parallelism; 140+ pre-defined protocols; FDA 21 CFR Part 11 compliance tools including e-signatures, audit trails, and user management

Microarray scanning systems

GenePix® 4000B Scanner



User-adjustable resolution 5–100 µm/pixel, 2 filters, 2 lasers, simultaneous scanning

GenePix® 4100A Scanner



User-adjustable resolution 5–100 µm/pixel, 8-position filter wheel, 2 laser choices, sequential scanning

GenePix® 4300A Scanner



User-adjustable resolution 5–100 µm/pixel, user-accessible 16-position filter wheel, 4 laser choices, sequential scanning

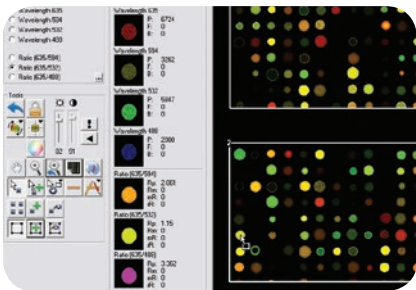
GenePix® 4400A Scanner



User-adjustable resolution 2.5–100 µm/pixel, user-accessible 16-position filter wheel, 4 laser choices, sequential scanning

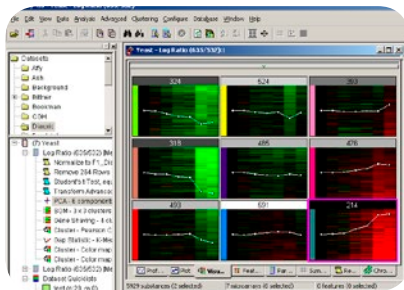
Microarray scanning software

GenePix® Pro Microarray Analysis Software



Operates all current GenePix Microarray Scanners, integrated image analysis, fast and accurate spot finding, powerful analysis and visualization for single arrays

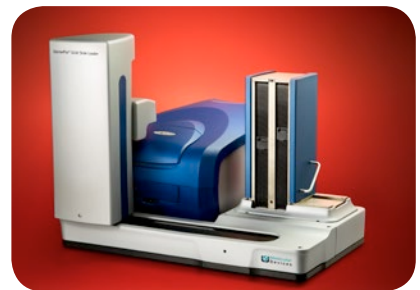
Acuity® Microarray Bioinformatics Software



Scalable database for all microarray data, seamless integration with GenePix Pro Software, powerful informatic algorithms, advanced statistics, normalization, and visualization tools

Microarray automation

GenePix® SL50 Microarray Slide Loader



50-slide capacity, compatible with GenePix 4300A and 4400A Scanners

Molecular Devices also offers:

- High-throughput cell-based screening systems
- Cellular imaging systems
- Automated and conventional electrophysiology systems
- OnSite service for life science products

Contact your local Molecular Devices sales representative or visit our web site for more information.

www.moleculardevices.com

Contact Us

Phone: +1-800-635-5577
 Web: www.moleculardevices.com
 Email: info@moldev.com

Check our website for a current listing of worldwide distributors.

Regional Offices

USA and Canada +1-800-635-5577
 Brazil +55-11-3616-6607
 China (Beijing) +86-10-6410-8669
 China (Shanghai) +86-21-3372-1088
 Germany 00800-665-32860

Japan (Osaka) +81-6-7174-8831
 Japan (Tokyo) +81-3-6362-5260
 South Korea +82-2-3471-9531
 United Kingdom +44-118-944-8000

