

Carousel 6 Plus™ Synthesis Family

Simultaneously heats/cools,
stirs and refluxes multiple
samples under an
inert atmosphere



*Cost effective
personal parallel
synthesis for solution
or solid phase chemistry*



Carousel 6 Plus Reaction Station synthesis family...

Parallel synthesis in round bottom flasks from 5ml to 250ml. Choose from magnetic stirring or mechanical overhead stirring; with a choice of options for heating and cooling from -78°C to +200°C...

Storm Work Station
controlled heating & cooling



200°C

-65°C



Breeze Work Station
rapid heating & cooling



165°C

-30°C



Temperature Control

- Heated via hotplate
- +/- 0.5°C using optional digital controller
- Up to 180°C



180°C



Easy-on PTFE Caps

- Chemically resistant
- Quick-thread for fast attachment
- Push-on connections to the stainless steel gas outlets

Aluminium Inserts

- Allows easy removal of flasks
- Excellent temperature transfer for refluxing

Carousel Stirring Hotplate

- Single rotating magnetic field to stir all positions
- Even and powerful stirring
- Choice of 3 models



Versatile and modular parallel synthesiser...

200°C

Heating

-78°C

Cooling



Magnetic
Stirring



Mechanical
Stirring

Central Quick Release inlet/outlet

- Vacuum and gas
- Radial gas distribution system
- Reactions under an inert atmosphere

Aluminium Reflux Head

- Efficient refluxing
- Water cooled
- Easy quick-release couplings

Reaction Flasks

- Up to 6 round bottom flasks
- 5ml to 250ml volume
- Wide range of glassware available



Stirring Bars

- Wide range of PTFE stirrer bars
- Powerful stirring
- Deep vortex



Cooled Carousel 6 Plus Reaction Station
sub-ambient parallel synthesis to -78°C



Tornado Overhead Stirring
powerful mechanical
parallel stirring



Carousel 6 Plus Reaction Station...

The patented Carousel 6 Plus simultaneously heats, stirs and refluxes multiple samples under an inert atmosphere...



The Carousel 6 Plus accepts round bottom flasks including: 5ml, 10ml, 25ml, 50ml, 100ml, 170ml and 250ml sizes.

Heated directly by the stirring hotplate; providing an operating temperature range from ambient to 180°C. Digital temperature control +/- 0.5°C.

Chemically resistant Easy-On PTFE caps feature a quick-thread for fast attachment to the glass tubes and push-on connections to the s/steel gas outlets.

Aluminium inserts allow easy removal of flasks and good thermal transfer for refluxing.

Utilises the single rotating magnetic field of the hotplate stirrer to stir all the positions evenly and powerfully.

Round aluminium base transmits heating evenly to all positions. Compact size has small bench-top footprint - easy to store.

Central inlet/outlet for vacuum and gas, combined with a radial gas distribution system and gas-tight PTFE caps, allow reactions under an inert atmosphere.

Round design makes all reaction flasks visible, with no need to lean into the fumehood.

Water cooled aluminium reflux head provides efficient refluxing within individual glass reaction flasks. Quick-release couplings prevent water loss during set-up/breakdown.

Range of glass vessels includes 5ml, 10ml, 25ml, 50ml, 100ml, 170ml & 250ml round bottom flasks, as well as vessels with one or two sidearms.

PTFE heat protection ring protects user from contact with hot base.

Carousel Stirring Hotplate offers higher temperature, more powerful stirring and digital control.

Rare earth elliptical PTFE stirring bar provides powerful stirring and a deep vortex.

180°C

Aluminium Inserts for 5ml, 10ml, 25ml, 50ml, 100ml and 170ml Flasks

Vessel Size (ml)	Reaction Positions	Stirring Speed (rpm)	Temp Range	Temp Accuracy	Inert Gas	Reflux
5, 10, 25, 50, 100, 170, 250	Up to 6	30 to 700	Ambient to +180°C	Better than 0.5°C	Yes	Yes

Features & benefits...



The improved Carousel 6 Plus includes many new features to make your parallel synthesis even easier...

Features...

- Powerful, even magnetic stirring - fits on to a Carousel stirring hotplate.
- Rapid and controlled heating to 180°C.
- Efficient water cooled reflux head.
- Perform reactions under an inert atmosphere.
- Quick to set-up, easy to use and maintenance free.
- Wide range of vessel sizes from 5ml to 250ml.
- Interchangeable flask formats; sidearms, baffles, wide neck and azeotropic.

Full range of glassware shown on page 14



Whats NEW...

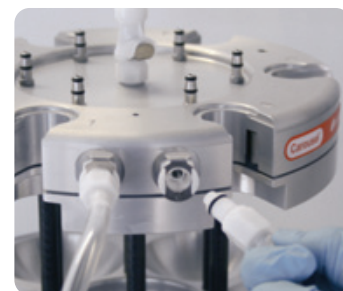
- Easy-on PTFE caps feature a 'quick-thread' for a gas tight seal to flasks.
- Innovative well design for improved heat transfer and reduced temperature variation.
- Easy to clean contoured surface.
- Exclusive wide neck flasks with quick coupling for improved sealing and ease of use.

Carousel 6 locates onto your Stirring Hotplate without the need for tools.



Rapid Heating & Efficient Refluxing

- Circular, solid aluminium base transmits heat rapidly and evenly to all positions.
- Boils six flasks of water in less than 25 minutes.
- Digital Temperature Controller gives accurate temperature control of either the block or solution to within +/- 0.5°C.
- PTFE heat protection ring helps protect user from accidental contact with hot aluminium base.
- Removable aluminium inserts in reflux head allow easy removal of flasks, yet maintain good heat transfer for refluxing. Built in spring clip retains flasks once aluminium insert is removed.
- Acetal quick-release valved couplings on the side of reflux head allow disconnection of cooling water without loss of water.
- Acetal quick-release coupling on top of the reflux head facilitates supply of inert gas or vacuum.



Easy-On PTFE Caps...

Chemically resistant, gas tight, PTFE caps with quick thread...

The PTFE caps are an essential component of the Carousel system. Manufactured from chemically resistant PTFE, the caps are attached to the reflux neck using a 1/4 turn quick-thread and feature an Easy-On push connection to the radial gas system. The RR91070 caps feature a silicone septa and on/off valve for isolation and removal from the inert gas system. The RR91072 storage cap features the quick-thread and septa, but without a sidearm or valve. Caps feature a replaceable Nitrile O-ring with a Viton option available.

- **RR91070** Easy-On PTFE Cap
- **RR91072** Easy-On PTFE Storage Cap
- **RR98060** O-ring for PTFE Caps - Nitrile 24mm
- **RR98160** O-ring for PTFE Caps - Viton 24mm



Silicone and Viton Septa...

All reaction caps feature a replaceable septa that allows the addition of reagents or removal of samples using a syringe. Septa are silicone as standard, with a Viton alternative available.

- **RR98076** Silicone Septa for PTFE Caps
- **RR98176** Viton Septa for PTFE Caps



Round bottom reaction flasks...

Chemically resistant borosilicate glass reactions flasks are available in a wide range of volumes and styles...



Standard Flasks...

- Constructed of heavy duty, borosilicate glass.
- Choice of sizes: 5ml, 10ml, 25ml, 50ml, 100ml, 170ml and 250ml.
- Precision engineered round bottom design ensures an excellent fit with the Carousel's wells, maximising heat transfer.
- Flasks feature a B24/B29 Rodaviss joint for connection to the detachable Reflux Tube.
- The 5ml and 10ml flasks feature a B14/23 Rodaviss joint.
- Reflux Tubes feature a quick-thread, which when combined with PTFE Easy-On Cap, give an excellent gas tight seal up to 1psi.
- Optional single piece 250ml Long Neck design.
- Compatible with magnetic stirring bars and the centrifugal stirrer paddles (Tornado).
- Flasks are NOT supplied with reflux tubes or PTFE caps, which must be ordered separately.



Standard Flasks with Sidearms...

- Sidearm flasks have all the features of the standard flasks with the addition of either one or two sidearms.
- Flasks are available with B14/23 and B24/29 sidearm options and include Rodaviss caps and sealing septa.
- Sidearms are compatible with Dropping Funnels and Solid Addition Funnels.



Azeotropic Flasks (Dean & Stark)...

- Unique single piece flasks fit directly into the Carousel 6 Plus, allowing chemists to perform up to six Azeotropic processes in parallel.
- Choice of sizes: 100ml and 250ml.
- Special Tornado version with wider neck is designed to accept centrifugal stirring paddle.
- Flasks feature a replaceable PTFE stopcock for removal of the aqueous phase.
- Feature B14/23 or B24/29 sidearms.
- Sidearms are compatible with Dropping Funnels and Solid Addition Funnels.



Wide Neck flasks with quick coupling...

- Wide neck flasks allow easier removal of viscous or solid samples and facilitate the use of the anchor and propeller style PTFE stirrer blade options (Tornado).
- These unique vessels feature a 50mm ID flat flange, which combines with a Nitrile O-ring and our unique self centering PTFE collar to offer a leak-tight seal between the glass flask and wide neck reflux tube.
- The two flanges are compressed together using a two part threaded polymer coupling, which both holds the components rigid and offers an excellent gas tight seal.



Wide Neck flasks with Sidearms...

- Wide neck sidearm flasks have all the features of the wide neck flasks with either one or two sidearms. Ideal for attaching dropping funnels or powder funnels.

Wide Neck flasks with Baffles & Sidearms...

- Wide necked baffled flasks improve the turbulence within the flask by disrupting the creation of a central vortex. Baffled flasks are recommended for use with stirrer paddles for maximum effect.



Flask accessories...



A range of accessories are available to compliment our range of round bottom reaction flasks...

Liquid and Solid Addition Funnels...

- Choice of 50ml Liquid Additions Dropping Funnels with B14/23 or B24/29 Rodaviss joints.
- The dropping funnels are ideal for the controlled addition of larger volumes of reagent directly into the reaction flask. Funnels feature a drip cone and pressure equalising arm for ease of addition.
- Choice of Solid Additions Funnel with B14/23 or B24/29 Rodaviss joints; ideal for the addition of powders or solids into the reaction flask.



Compatible with Rotary Evaporators...

- Choice of three Rotary Evaporator Adapters for connecting flasks to leading brands such as Heidolph, Buchi and IKA. Choice of standard B29, Rodaviss B29 and US 24/40.



Carousel 6 Plus with 250ml flasks and Liquid Additions Dropping Funnel

Compatible with Genevac Centrifugal Evaporators...

- Carousel 6 flasks are compatible with the range of racks from Genevac.
- For assistance in selecting the correct Genevac rack for your reaction tubes or flasks please visit the Genevac web site.
- Also available: 250ml EZ-2/HT straight sided evaporation flask for large volume evaporations. This flask is designed to maximise the quantity and volume that can be held in a single run, with 4 x 250ml flasks per system. Flasks have a GL32 thread. IMPORTANT: this flask will not fit in the Carousel 6 Plus.



Flasks are compatible with standard Rotary Evaporators

PTFE Magnetic Stirrer Bars...

- RR98075 Small Cross Shaped Stirring Bar creates a vortex at slow speeds.
- RR98091 The popular Medium Cross Shaped Rare Earth Stirring Bar contains strong rare earth magnets, it creates a deep vortex and is ideal for stirring resins and viscous samples.
- RR98070 & RR98071 Octagonal Stirring Bars are general purpose stirring bars, available in both small and large sizes.
- RR98096, RR98097 & RR99064 Elliptical Rare Earth Stirring Bars facilitate powerful stirring with a good vortex even in viscous samples, available in three sizes.
- RR98095 Stirring Bar Evaluation Kit contains 3 of each of our 10 most popular stirring bar styles allowing you to identify the best stirring bar for your application.
- RR98094 PTFE Stirring Bar Retriever allows you to retrieve stirring bars from flasks.
- RR98114 PTFE Stirring Bar Restrainer allows you to restrain stirring bar when dispensing liquids.



Flasks are compatible with Genevac Racks.

Other Accessories...

- RR99062 Replacement Quick Release Coupling with shut-off valve (reflux).
- RR99063 90° Elbow Quick Release Barbed Coupling with shut-off valve.
- RR91066 Replacement Quick Release Coupling without shut-off valve (gas).
- RR99061 Cork Support Ring for bench-top support of individual flasks.
- RR99067 Tubing for connection to inert gas or reflux cooling, 2m.
- RR98906 Black Lab Marker Pen. Writes on glass, wet or dry.



Cooled Carousel 6 Plus Reaction Station...



Offering cost effective low temperature parallel synthesis down to -78°C ...

The Cooled Carousel 6 allows chemists to perform stirred, sub-ambient reactions in a range of round bottom flasks from 5ml to 250ml with the option of an inert, moisture free atmosphere.



HDPE Lid reduces frost formation and reduces the risk of solvents spitting.

Central inlet/outlet for vacuum and gas, combined with a radial gas distribution system and gas-tight PTFE caps allow reactions under an inert atmosphere.

Chemically resistant Easy-On PTFE caps feature a quick-thread for fast attachment to the glass tubes and push-on connections to the s/steel gas outlets.

Round design makes all reaction flasks visible; with no need to lean into the fume cupboard.

Robust HDPE cooling reservoir is compatible with a wide range of freezing mixtures including dry-ice/acetone for manually controlled cooling from ambient to -78°C .

Insulated foam core maintains low temperatures for long periods, whilst protecting the stirrer from freezing. Also reduces condensation and ice formation on outer surfaces.

Rare earth elliptical PTFE stirring bar provides powerful stirring and a deep vortex.

Utilises the single rotating magnetic field of the hotplate stirrer to stir all the positions evenly and powerfully.

No electrical or moving parts ensures maintenance free operation. Easy to set-up with minimal training time.

Fits on a standard Carousel stirring hotplate.



Cooled Carousel 6 Plus with 250ml flasks, Liquid Additions Dropping Funnel and Equalising Arms.

Carousel Stirring Hotplate powerful stirring with digital control.

Compact size has a small bench-top footprint and is easy to store.



HDPE Cooled Carousel Stand

Vessel Size (ml)	Reaction Positions	Stirring Speed (rpm)	Temp Range	Temp Accuracy	Inert Gas	Reflux
5, 10, 25, 50, 100, 170, 250	Up to 6	30 to 700	Ambient to -78°C	N/A	Yes	No

Features & benefits...



The Cooled Carousel 6 Plus uses the same range of round bottom flasks, caps and accessories as the Carousel 6 Plus...

Features...

- Simultaneously performs up to six cooled and stirred reactions to -78°C.
- Powerful, even stirring - reservoir fits on to a Carousel stirring hotplate.
- Robust HDPE cooling reservoir is compatible with a wide range of cooling mixtures, including dry-ice/acetone for manually controlled cooling from ambient down to -78°C.
- Insulated foam core maintains low temperatures for long periods, whilst protecting the stirrer from freezing.
- Insulation also reduces condensation and ice formation on outer surfaces of reservoir.
- HDPE lid keeps your reaction cooler for longer, minimises ice formation on your flasks (maintaining visibility of the contents) and prevents spitting from the cooling mixture.
- Round design makes all reaction flasks visible and allows easy addition of reagents and solvents, with no need to lean into the fumehood.



Carousel Stirring Hotplates...



Standard



Tech



Advanced

Carousel stirring hotplates feature 800 Watt heating power, chemically resistant top plates and are available in three models to suit your chemistry and budget...

- 800 Watt heating power.
- Speed range: 100 - 1400rpm.
- 135mm top plate diameter.
- Heating range: 20 to 300°C.
- Chemically resistant Kera-Disk® top plate.
- 3 Year Warranty.



RR91210 Carousel Temp. Controller

	Carousel Standard	Carousel Tech	Carousel Advanced
Speed, max (rpm)	1400	1400	1400
Display	-	Digital	Digital
Analogue/digital interface	-	-	RS232
Heating power (W)	800 (600 for 115V)	800 (600 for 115V)	800 (600 for 115V)
Hotplate temperature (°C)	20 - 300	20 - 300	20 - 300
Accuracy temperature setting (K)	± 5	± 1	± 1
External temperature sensor	Carousel Temperature Controller	Carousel Temperature Controller	Integral Pt1000
Temp. accuracy with external temp. sensor (K)	± 1	± 1	± 0.2
Temperature control	Electronic	Electronic	Microprocessor
Safety circuit hotplate (°C)	25°C over hotplate temperature	25°C over hotplate temperature	10 - 25°C over nominal temperature
Plate diameter (mm)	ø 135	ø 135	ø 135
Plate material	Kera-Disk (Silumin + ceramic coating)	Kera-Disk (Silumin + ceramic coating)	Kera-Disk (Silumin + ceramic coating)



Carousel Temperature Controller...

- Fuzzy logic control ensures rapid heating with no overshoot.
- Digital display for set and actual temperature.
- Control range: ambient temperature to +300°C.
- Displays temperatures from -50°C to +300°C.
- MAX-button displays temperature at which the item automatically is switched off.

Carousel Temp. Controller	
Cat No.	RR91210
Temperature range	-50 to +300°C
Resolution	0.1°C
Accuracy	± 1°C
Control Accuracy	± 0.5°C
Metal Sensor	Pt1000, V2A
Sensor Length	210mm

Tornado Plus Overhead Stirring System...



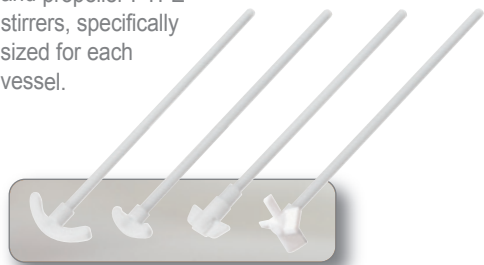
180°C



The Tornado integrates with the Carousel 6 Plus to offer powerful, overhead mechanical stirring, ideal for both viscous samples and for the dispersion of delicate solids in solution...

Choice of PTFE Stirring Paddles...

Choose from centrifugal, anchor and propeller PTFE stirrers, specifically sized for each vessel.



Uses a single overhead stirrer to agitate up to six 250ml flasks. Compatible with all leading brands of overhead stirrer.

Attaches onto the Carousel 6 Plus without the use of tools.

Heated directly by the hotplate; Digital temperature control $\pm 0.5^\circ\text{C}$.

Easy to operate and set-up with minimal training time.



Tool-free PEEK 'Pinch-Grip' mechanism and stirrer sealing system allows easy stirrer shaft insertion and operation under an inert atmosphere.

2-speed drive (1:1 & 2:1) allows lower rated stirrers to be used for higher viscosity liquids.



Choice of flask sizes and styles; with wide neck option...

Wide neck flasks allow easier removal of viscous and solid samples and the use of larger stirrer blades. Baffles also improve stirring by disrupting the creation of a vortex.

Integral polycarbonate safety guard.

Accepts 50ml, 100ml & 250ml round bottom flasks (sidearms, wide necks, baffled flasks available).

Provides up to six heated (max $+180^\circ\text{C}$) and stirred reaction positions.

Fits on a standard Carousel stirring hotplate.



Universal Support Stand aids stability...

This heavy duty, stainless steel and aluminium stand provides the added support needed for stable operation of the Tornado. Tool-free design is easy to assemble.

Integrates with existing Carousel 6 without increasing footprint.

Vessels (ml)	Reaction Positions	Stirring Speed (rpm)	Stirring Shafts	Max Viscosity	Temp Range	Drive System
50, 100, 250	Up to 6	0 to 1000	Anchor, Propeller & Centrifugal	10,000cps	Ambient to $+180^\circ\text{C}$	Toothed Belt

Features & benefits...



The Tornado Plus allows you to use a single overhead stirrer to simultaneously stir up to six round bottom flasks from 50ml to 250ml, increasing your productivity by up to 600%...

Features...

- Mechanical overhead stirring with a choice of three PTFE stirrer paddle styles; centrifugal, anchor and propeller.
- Uses a single overhead stirrer to stir all positions simultaneously - saving space and money compared with multiple set-ups. Compatible with all leading brands of overhead stirrer.
- Rapid and controlled heating to 180°C; with integral water cooled reflux head.
- Accepts 50ml, 100ml and 250ml round bottom flasks.
- Unique PEEK 'Pinch-Grip' mechanism allows easy, 'tool-free' stirrer shaft insertion and operation under an inert atmosphere.
- Exclusive wide neck flasks with quick coupling for improved sealing and ease of use.
- 2-speed drive allows overhead stirrers with less torque to be used for higher viscosities.
- Stir to 1000rpm in low viscosity solutions. Max. viscosity 10,000mPas at 500rpm.
- Integral polycarbonate safety guard prevents accidental contact with rotating parts.



Individual vessels can be removed easily

Tornado with 250ml wide neck flasks

RS Overhead Stirrers...

The powerful RS range can accomplish the most demanding mixing tasks whilst providing the highest safety and increased operating lifetime...

Features...

- Powerful stirring from 40 to 2000rpm.
- Smooth start, which prevents splashing and spills.
- Lightweight, easy to set-up and use.
- Mechanical and electronic options, with analogue or digital control.
- Designed for continuous 24 hour operation and high viscosity applications.
- High torque (up to 520 Ncm) provides better mixing in less time; reducing process times.
- Two gear design guarantees the highest power over the entire speed range.
- Sealed housing which helps prevent internal corrosion from aggressive liquids and vapours and ensures years of maintenance-free operation.
- Sparkless motors reduce potential risks in volatile environments.
- Safety over-temperature sensor shuts off the unit to prevent overheating.



RS37 Digital Plus Overhead Stirrer



RS27 Standard Overhead Stirrer



RS50 Control Overhead Stirrer



	RS27 Standard	RS37 Digital Plus	RS50 Control
Power input/output (W)	50/27	70/37	80/50
Gears	2	2	1
Speed range (rpm)	40 - 400 (200 - 2,000)	40 - 400 (200 - 2,000)	50 - 2,000
Speed indicator	Analogue	Digital	Digital
Speed control	Mechanic	Mechanic	Electronic
Maximum torque (Ncm)	400	520	20 (40 overload mode)
Power reserve under overload (%)	-	-	200
Torque indicator (Ncm)	-	-	Digital
Viscosity up to (mPa s)	60,000	100,000	10,000
Stirring cap. H ₂ O up to (l)	25	40	40
RS232 interface	-	-	yes

Breeze Heating/Cooling Work Station...



Combined with a circulator, the compact Breeze provides rapid heating/cooling and is ideal for applications requiring precise control by solution temperature...

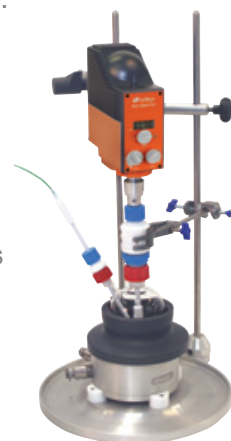


Breeze, Carousel 6, Tornado and overhead stirrer

Designed as an add-on module for the Carousel 6 Plus and Tornado, Breeze creates a 'Parallel Process Reactor' that heats/cools and mechanically stirs 6 flasks (50ml to 250ml). Breeze is ideal for applications that require precise solution temperature control, such as crystallisation studies.

Features...

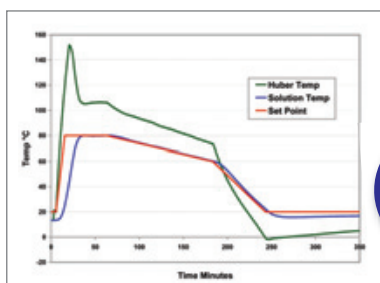
- Rapidly heat/cool, multiple or individual flasks up to 5 litres.
- Thermofluid range of -85°C to +235°C; providing a solution temperature of -30°C to +165°C.
- 135mm ø top plate integrates with the Carousel 6 Plus, Tornado, Heat-On and other reaction blocks.
- Breeze's small internal volume ensures a quick response to changes in thermofluid temperature.
- Internal design maximises heat transfer from the thermofluid to the top plate and minimises temperature variation across the surface.
- Mechanical stirring provided by Tornado or overhead stirrer.
- M16 hose connections, suitable for all popular brands of circulator.



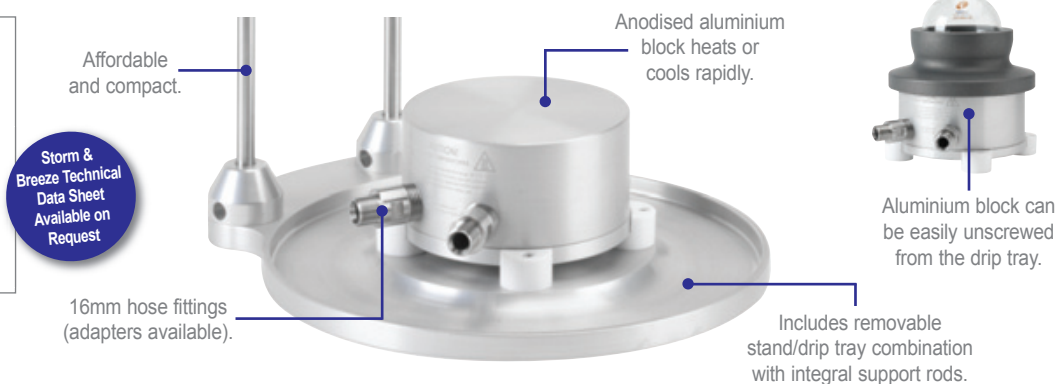
Breeze with 250ml Heat-On, stand and overhead stirrer

Removable stand and drip tray...

Breeze comes with a removable aluminium stand and stainless steel support rods that ensure the set-up is sturdy and safe. The stand also acts as a drip-tray for any spills or condensation that may form when being used at sub-ambient temperatures.



Breeze Stepped Temperature Profile using a Huber Ministat 230



Technical Specifications

Description	Breeze
Solution Temperature Range	-30°C to +165°C
Thermofluid Operating Limits	-85°C to +235°C
Control by Solution Temperature	Yes
Typical Applications	Variable temp applications such as crystallisation
Hose Fittings	M16 (16mm)
Dimensions (mm)	135 x 80mm
Insulated	No
Weight	Without stand 1.6kg (With stand 3.2kg)

What is the difference between Storm & Breeze?

Storm: Features a sophisticated internal fluid path that combines with a high performance insulated case to maximise thermal transfer. These features create a temperature control module that has a wide operating range with excellent heat transfer, making Storm ideal for steady state reactions from -65°C to +200°C that require stable temperatures for extended periods, with minimal variation across the heated surface.

Breeze: Small bench-top footprint and no insulation; resulting in a narrower operating range of -30°C to +165°C. Yet because it is smaller, Breeze has a much faster response time to required changes in temperature. This makes Breeze more suitable for applications that require solution control such as crystallisation studies.

Description	Heating Power (kW)	Cooling Power at 0°C (kW)	Storm		Breeze	
			Cooling to -30°C	Heating to 100°C	Cooling to -30°C	Heating to 100°C
Huber Ministat 230 (-33°C/+200°C)	2.0	0.35	n/a	34 mins	n/a	30 mins
Huber Unistat 705 (-75°C/+250°C)	1.5	0.65	44 mins	56 mins	60 mins	44 mins
Huber Unistat 825 (-85°C/+250°C)	3.0	2.2	27 mins	27 mins	85 mins	n/a

Storm Heating/Cooling Work Station...



Combined with a suitable circulator, Storm can provide controlled steady state heating and cooling...

Storm was designed as an add-on module for the Carousel 6 Plus and Tornado combination, creating a powerful 'Parallel Process Reactor' that heats, cools and mechanically stirs up to 6 flasks (50ml to 250ml), making it the ideal process optimisation and development tool.

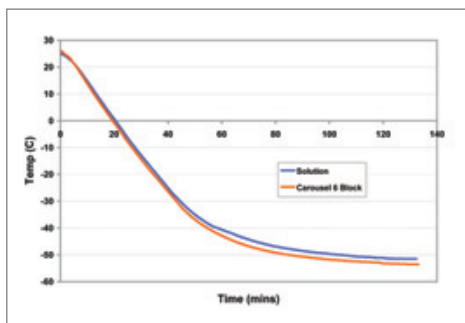
Features...

- Multiple or single stirred reactor, with controlled heating/cooling from 5ml to 5 litres.
- Thermofluid range of -85°C to +235°C; providing a solution temperature -65°C to +200°C.
- 135mm ø top plate integrates with the Carousel 6 Plus, Tornado, Heat-On & other reaction blocks.
- Ideal for temperature controlled, steady state reactions.
- Unique internal design maximises heat transfer from the thermofluid, focusing the energy towards the top plate surface. This design also minimises temperature variation across the contoured top plate.
- The insulated outer case reduces heat loss and prevents contact with hot/cold thermofluid.
- Optional two-piece, removable PTFE insulating plate provides increased energy efficiency, for improved heating and cooling; it also helps reduce ice formation on exposed surfaces at sub-ambient temperatures.
- Mechanical stirring provided by Tornado or suitable overhead stirrer.
- M24 hose connections, suitable for all popular brands of circulator.

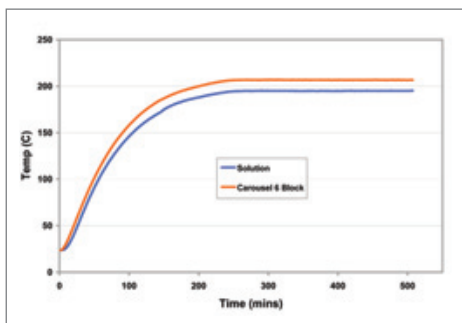


Storm with Carousel 6 Plus, Tornado, overhead stirrer and PTFE insulating plate

Typical cooling & heating profiles for Storm...



Storm/Carousel 6 Cooling Profile using a Huber 705



Storm/Carousel 6 Heating Profile using a Huber 705



Carousel 6 Plus locates on to the Storm without tools



Technical Specifications

Description	Storm
Solution Temperature Range	-65°C to +200°C
Thermofluid Operating Limits	-85°C to +235°C
Control by Solution Temperature	No
Typical Applications	Steady state temp reactions such as parallel chemistry
Hose Fittings	M24 (24mm)
Dimensions (mm)	367 x 143.5mm
Insulated	Yes
Weight	13kg

Carousel 6 Plus Glassware & Accessories...

Flexibility is key to your chemistry, so with the Carousel 6 Plus we offer a broad range of glassware and accessories...

Standard Flasks



RR99151 5ml Flask
 RR99148 10ml Flask
 RR99923 B14/23 Reflux Tube + Connecting Set
 RR99145 25ml Flask
 RR99070 50ml Flask
 RR99054 100ml Flask
 RR99052 170ml Flask
 RR99041 250ml Flask
 RR99917 250ml Flask + Reflux Tube + Connecting Set
 RR99918 B24/29 Reflux Tube + Connecting Set
 RR99919 250ml Long Neck Flask

Standard Flask with Sidearms



RR99071 50ml Flask with B14/23 Sidearm
 RR99074 100ml Flask with B14/23 Sidearm
 RR99077 250ml Flask with B24/29 Sidearm
 RR99047 250ml Flask with B14/23 Sidearm
 RR99087 250ml Flask with 2x B14/23 Sidearm
 RR99088 250ml Flask with 2x B24/29 Sidearm
 RR99089 250ml Flask with 1x B14/23 Sidearm 1x B24/29 Sidearm

Wide Neck Flasks with Coupling



RR99924 Wide Neck Reflux Tube + Coupling
 RR99925 Coupling for Wide Neck Flasks
 RR99940 PTFE Wide Neck Support Collar
 RR99941 Nitrile O-ring for PTFE Wide Neck Flask
 RR99926 50ml Wide Neck Flask
 RR99928 100ml Wide Neck Flask
 RR99933 250ml Wide Neck Flask

Wide Neck Flasks with Sidearms



RR99927 50ml Wide Neck Flask with B14/23 Sidearm
 RR99929 100ml Wide Neck Flask with B14/23 Sidearm
 RR99930 100ml Wide Neck Flask with 2x B14/23 Sidearm
 RR99934 250ml Wide Neck Flask with B24/29 Sidearm
 RR99935 250ml Wide Neck Flask with 2x B24/29 Sidearm

Wide Neck Flasks with Baffles & Sidearms



RR99931 100ml Baffled Wide Neck Flask with B14/23 Sidearm
 RR99932 100ml Baffled Wide Neck Flask with 2x B14/23 Sidearms
 RR99936 250ml Baffled Wide Neck Flask with B24/29 Sidearm
 RR99937 250ml Baffled Wide Neck Flask with 2x B24/29 Sidearms

Flasks are NOT supplied with reflux tubes or PTFE caps, these must be purchased separately.

Azeotropic Glassware



RR99922 100ml Azeotropic Flask
 RR99920 250ml Azeotropic Flask



RR99939 100ml Tornado Azeotropic Flask
 RR99938 250ml Tornado Azeotropic Flask

Easy-On PTFE Caps



RR91070 Easy-On PTFE Cap
 RR91072 Easy-On PTFE Storage Cap

Sundry Glassware



RR99049
B14/23 Solid Additions Funnel



RR99079
B24/29 Solid Additions Funnel



RR99048
B14/23 Liquid Additions Dropping Funnel + Pressure Equalising Arm



RR99078
B24/29 Liquid Additions Dropping Funnel + Pressure Equalising Arm



RR99053
250ml EZ-2/HT Evaporation Flask



RR99045
Rotary Evaporator Adapter Rodaviss B29 Socket to B24 Cone



RR99046
Rotary Evaporator Adapter Ordinary B29 Socket to B24 Cone



RR99055
Rotary Evaporator Adapter USA 24/40 Socket to B24 Cone

PTFE Stirring Paddles



RR99240
Centrifugal PTFE Stirrer Paddle



RR99244
Anchor PTFE Stir Paddle for 100ml Flasks



RR99248
Anchor PTFE Stir Paddle for 250ml Flasks



RR99251
Propellor PTFE Stirrer Paddle

Aluminium Inserts



RR99142
5ml Insert



RR99141
10ml Insert



RR99140
25ml Insert



RR99060
50ml Insert



RR99058
100ml Insert



RR99057
170ml Insert

Magnetic Stirring Bars



RR98075
Cross Shape Stirring Bar 10mm



RR98091
Cross Shape Stirring Bar 16.5mm RE



RR98096
Elliptical Stirring Bar 10mm RE



RR98097
Elliptical Stirring Bar 15mm RE



RR99064
Elliptical Stirring Bar 25mm RE



RR98070
Octagonal Stirring Bar 13mm RE



RR98071
Pivot Ring Stirring Bar 12x6mm



RR98095
Stirring Bar Evaluation Kit



RR98094
PTFE Magnetic Stirring Bar Retriever (350mm)

Accessories



RR98906
Black Lab Marker Pen



RR99061
Reaction Flask Support Ring



RR98076
Silicone Septa for PTFE Caps



RR98176
Viton Septa for PTFE Caps



RR99062
Coupling + Shut-off valve



RR99063
90° Coupling + Shut-off valve



RR99051
B14/23 Rodaviss Sealing Cap



RR99043
B24/29 Rodaviss Sealing Cap



RR99955
B14/23 Rodaviss Connecting Set



RR99044
B24/29 Rodaviss Connecting Set



RR99080
Spare PTFE/Silicone Septa 20mm B14/23



RR99082
Spare PTFE/Silicone Septa 29mm B24/29



RR99068
B14/23 Rodaviss Connecting Cap



RR99090
B24/29 Rodaviss Connecting Cap



RR99905
Digital Thermometer (-250°C to +400°C)



RR99908
Dry Ice Scoop



RR98024
Protective Cold Temperature Gloves



RR99910
Protective Face Shield



RR99909
Cold Temperature Apron 1060mm long



HB6945
M24 Male to M16 Female Adapter



HB6431
M16 Female to M30 Male Adapter



HB6195
M16 90 Degree Adapter



HB6091
M16 Ball Valve



RR96316
M16 Thread Protection Cap



HB6724
M24 Female to M16 Male Adapter



HB6723
M24 Female to M30 Male Adapter



HB9256
M24 90 Degree Adapter



HB9236
M24 Ball Valve



RR96336
M24 Thread Protection Cap



HB6454
M16 Male to M30 Female Adapter



HB9268
M24 Male to M30 Female Adapter



HB6461
M30 90 Degree Adapter



HB6451
M30 Ball Valve



RR96348
M30 Thread Protection Cap



Insulated Hose 100cm to 300cm with M16 Thread



Insulated Hose 100cm to 300cm with M24 Thread



RR96220
PTFE Insulating Plate for Carousel 6 Plus

Carousel 6 Plus Systems...

These pre-configured Carousel 6 Plus 'systems' are designed to make ordering quick and easy. The systems offered reflect the most popular configurations and include all the items you will need to get your Carousel 6 Plus up and running...

Heated System - Basic

180°C

System 34

- RR99943 Carousel 6 Plus System
 1 x RR99916 Carousel 6 Plus Reaction Station
 1 x RR91070 Easy-On PTFE Cap, pk 6
 1 x RR98076 Silicone Septa for PTFE Caps, pk 100
 1 x RR98094 PTFE Magnetic Stirring Bar Retriever 350mm
 1 x RR99917 250ml Reaction Flask + Reflux Tube + Connecting Set, pk 6
 1 x RR99043 B24/29 Rodaviss Sealing Cap, pk 10
 1 x RR99046 Rotary Evaporator Adapters Ordinary B29 Socket to B24 Cone, pk 2
 1 x RR99061 Reaction Flask Support Ring, pk 6
 1 x RR99064 Elliptical Stirring Bar 25mm RE, pk 10
 1 x RR99067 Tubing for Inert Gas or Reflux Cooling 2 metres

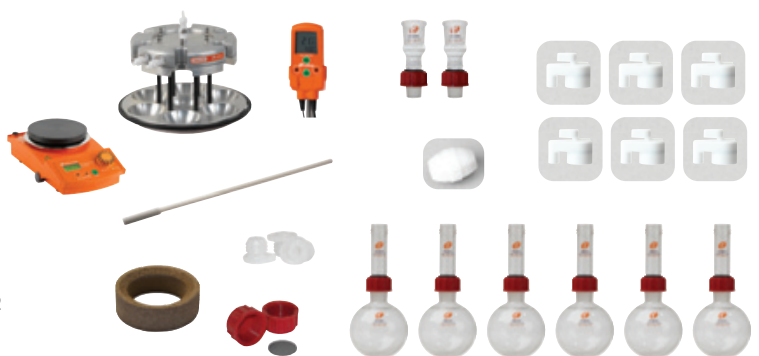


Heated System - Basic + Hotplate

180°C

System 33

- RR99942 Carousel 6 Plus System
 1 x RR99916 Carousel 6 Plus Reaction Station
 1 x RR91070 Easy-On PTFE Cap, pk 6
 1 x RR91202 Carousel Tech Stirring Hotplate 230v UK Plug
 1 x RR91210 Carousel Temperature Controller
 1 x RR98076 Silicone Septa for PTFE Caps, pk 100
 1 x RR98094 PTFE Magnetic Stirring Bar Retriever 350mm
 1 x RR99917 250ml Reaction Flask + Reflux Tube + Connecting Set, pk 6
 1 x RR99043 B24/29 Rodaviss Sealing Cap, pk 10
 1 x RR99046 Rotary Evaporator Adapters Ordinary B29 Socket to B24 Cone, pk 2
 1 x RR99061 Reaction Flask Support Ring, pk 6
 1 x RR99064 Elliptical Stirring Bar 25mm RE, pk 10
 1 x RR99067 Tubing for Inert Gas or Reflux Cooling 2 metres

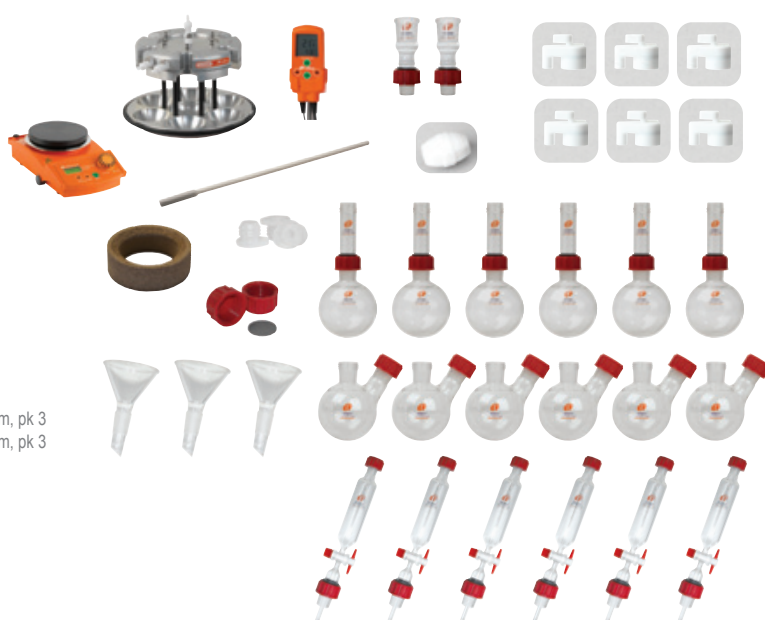


Heated System - Additions

180°C

System 35

- RR99944 Carousel 6 Plus System
 1 x RR99916 Carousel 6 Plus Reaction Station
 1 x RR91070 Easy-On PTFE Cap, pk 6
 1 x RR91202 Carousel Tech Stirring Hotplate 230v UK Plug
 1 x RR91210 Carousel Temperature Controller
 1 x RR98076 Silicone Septa for PTFE Caps, pk 100
 1 x RR98094 PTFE Magnetic Stirring Bar Retriever 350mm
 1 x RR99917 250ml Reaction Flask + Reflux Tube + Connecting Set, pk 6
 1 x RR99043 B24/29 Rodaviss Sealing Cap, pk 10
 1 x RR99046 Rotary Evaporator Adapters Ordinary B29 Socket to B24 Cone, pk 2
 1 x RR99061 Reaction Flask Support Ring, pk 6
 1 x RR99064 Elliptical Stirring Bar 25mm RE, pk 10
 1 x RR99067 Tubing for Inert Gas or Reflux Cooling 2 metres
 1 x RR99077 B24/29 250ml Reaction Flasks with Sidearm + Septa Port, pk 6
 1 x RR99078 B24/29 Liquid Additions Dropping Funnel with Pressure Equalising Arm, pk 3
 1 x RR99078 B24/29 Liquid Additions Dropping Funnel with Pressure Equalising Arm, pk 3
 1 x RR99079 B24/29 Solid Additions Funnel, pk 3
 1 x RR99082 PTFE/Silicone Septa 29mm for B24/29, pk 50

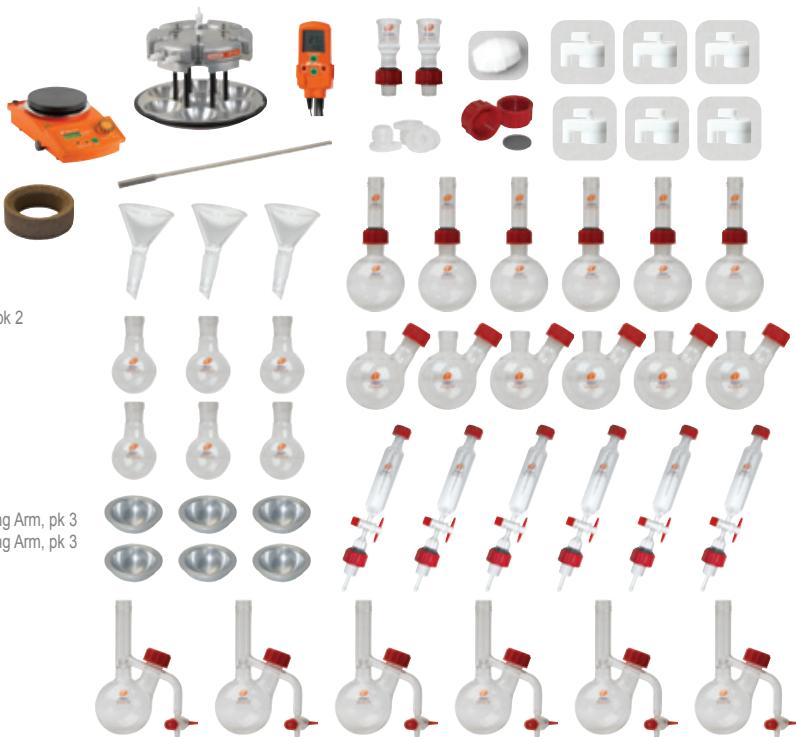


Heated System - Comprehensive

180°C

System 36

- RR99945 Carousel 6 Plus System
1 x RR99916 Carousel 6 Plus Reaction Station
1 x RR91070 Easy-On PTFE Cap, pk 6
1 x RR91202 Carousel Tech Stirring Hotplate 230v UK Plug
1 x RR91210 Carousel Temperature Controller
1 x RR98076 Silicone Septa for PTFE Caps, pk 100
1 x RR98094 PTFE Magnetic Stirring Bar Retriever 350mm
1 x RR99917 250ml Reaction Flask + Reflux Tube + Connecting Set, pk 6
1 x RR99043 B24/29 Rodaviss Sealing Cap, pk 10
1 x RR99046 Rotary Evaporator Adapters Ordinary B29 Socket to B24 Cone, pk 2
1 x RR99054 100ml Reaction Flask, pk 6
1 x RR99920 250ml Azeotropic Reaction Flask, pk 3
1 x RR99920 250ml Azeotropic Reaction Flask, pk 3
1 x RR99058 Aluminium Insert for 100ml Reaction Flask, pk 6
1 x RR99061 Reaction Flask Support Ring, pk 6
1 x RR99064 Elliptical Stirring Bar 25mm RE, pk 10
1 x RR99067 Tubing for Inert Gas or Reflux Cooling 2 metres
1 x RR99077 B24/29 250ml Reaction Flasks with Sidearm + Septa Port, pk 6
1 x RR99078 B24/29 Liquid Additions Dropping Funnel with Pressure Equalising Arm, pk 3
1 x RR99078 B24/29 Liquid Additions Dropping Funnel with Pressure Equalising Arm, pk 3
1 x RR99079 B24/29 Solid Additions Funnel, pk 3
1 x RR99082 PTFE/Silicone Septa 29mm for B24/29, pk 50



Cooled System - Upgrade

-78°C

System 38

- RR99949 Cooled Carousel 6 Plus System
1 x RR99947 Cooled Carousel 6 Plus (Reservoir, Head, Stand + Cover)
1 x RR98024 Protective Cold Temperature Gloves
1 x RR98076 Silicone Septa for PTFE Caps, pk 100
1 x RR99067 Tubing for Inert Gas or Reflux Cooling 2 metres
1 x RR99905 Digital Thermometer (-250°C to +400°C) + 200mm Probe
1 x RR99908 Dry Ice Scoop
1 x RR99909 Cold Temp. Apron 1060mm long Waterproof
1 x RR99910 Protective Face Shield



This system does not include reaction flasks, stirring hotplate etc and is intended for those users who already have a heated Carousel 6 Plus.

Cooled System - Comprehensive

-78°C

System 39

- RR99950 Cooled Carousel 6 Plus System
1 x RR99947 Cooled Carousel 6 Plus (Reservoir, Head, Stand + Cover)
1 x RR98024 Protective Cold Temperature Gloves
1 x RR91070 Easy-On PTFE Cap, pk 6
1 x RR91202 Carousel Tech Stirring Hotplate 230v UK Plug
1 x RR98076 Silicone Septa for PTFE Caps, pk 100
1 x RR98094 PTFE Magnetic Stirring Bar Retriever 350mm
1 x RR99917 250ml Reaction Flask + Reflux Tube + Connecting Set, pk 6
1 x RR99043 B24/29 Rodaviss Sealing Cap, pk 10
1 x RR99046 Rotary Evaporator Adapters Ordinary B29 Socket to B24 Cone, pk 2
1 x RR99054 100ml Reaction Flask, pk 6
1 x RR99061 Reaction Flask Support Ring, pk 6
1 x RR99064 Elliptical Stirring Bar 25mm RE, pk 10
1 x RR99067 Tubing for Inert Gas or Reflux Cooling 2 metres
1 x RR99077 B24/29 250ml Reaction Flasks with Sidearm + Septa Port, pk 6
1 x RR99078 B24/29 Liquid Additions Dropping Funnel with Pressure Equalising Arm, pk 3
1 x RR99078 B24/29 Liquid Additions Dropping Funnel with Pressure Equalising Arm, pk 3
1 x RR99079 B24/29 Solid Additions Funnel
1 x RR99905 Digital Thermometer (-250°C to +400°C) + 200mm Probe
1 x RR99908 Dry Ice Scoop
1 x RR99909 Cold Temp. Apron 1060mm long Waterproof
1 x RR99910 Protective Face Shield



Carousel 6 Plus - Product Listing...

Carousel 6 Plus Reaction Station

Carousel 6 Plus

RR99916 Carousel 6 Plus Reaction Station

Carousel 6 Plus Systems

RR99942 Carousel 6 Plus System 33 - Heated System - Basic + Hotplate
RR99943 Carousel 6 Plus System 34 - Heated System - Basic
RR99944 Carousel 6 Plus System 35 - Heated System - Additions
RR99945 Carousel 6 Plus System 36 - Heated System - Comprehensive

Glassware

Standard Flasks & Reflux Tubes

RR99151 5ml Reaction Flask with B14/23 Neck, pk 6
RR99148 10ml Reaction Flask with B14/23 Neck, pk 6
RR99923 B14/23 Reflux Tube + Connecting Set, pk 6
RR99145 25ml Reaction Flask, pk 6
RR99070 50ml Reaction Flask, pk 6
RR99054 100ml Reaction Flask, pk 6
RR99052 170ml Reaction Flask, pk 6
RR99041 250ml Reaction Flask, pk 6
RR99917 250ml Reaction Flask + Reflux Tube + Connecting Set, pk 6
RR99918 B24/29 Reflux Tube + Connecting Set, pk 6
RR99919 250ml Long Neck Reaction Flask, pk 6

Standard Flasks with Sidearms

RR99071 50ml Reaction Flask with B14/23 Sidearm + Septa Port, pk 6
RR99074 100ml Reaction Flask with B14/23 Sidearm + Septa Port, pk 6
RR99077 250ml Reaction Flask with B24/29 Sidearm + Septa Port, pk 6
RR99047 250ml Reaction Flask with B14/23 Sidearm + Septa Port, pk 6
RR99087 250ml Reaction Flask with 2x B14/23 Sidearms + Septa Port, pk 6
RR99088 250ml Reaction Flask with 2x B24/29 Sidearms + Septa Port, pk 6
RR99089 250ml Reaction Flask with 1x B14/23 + 1x B24/29 Sidearm + Septa Port, pk 6

Wide Neck Flasks with Coupling

RR99924 Wide Neck Reflux Tube + Coupling
RR99925 Coupling for Wide Neck Flasks
RR99940 PTFE Wide Neck Support Collar
RR99941 Nitrile O-Ring for PTFE Wide Neck Support Collar
RR99926 50ml Wide Neck Flask
RR99928 100ml Wide Neck Flask
RR99933 250ml Wide Neck Flask

Wide Neck Flasks with Sidearms

RR99927 50ml Wide Neck Flask with B14/23 Sidearm + Septa Port
RR99929 100ml Wide Neck Flask with B14/23 Sidearm + Septa Port
RR99930 100ml Wide Neck Flask with 2x B14/23 Sidearms + Septa Port
RR99934 250ml Wide Neck Flask with B24/29 Sidearm + Septa Port
RR99935 250ml Wide Neck Flask with 2x B24/29 Sidearms + Septa Port

Wide Neck Flasks with Baffles & Sidearms

RR99931 100ml Baffled Wide Neck Flask with B14/23 Sidearm + Septa Port
RR99932 100ml Baffled Wide Neck Flask with 2x B14/23 Sidearms + Septa Port
RR99936 250ml Baffled Wide Neck Flask with B24/29 Sidearm + Septa Port
RR99937 250ml Baffled Wide Neck Flask with 2x B24/29 Sidearms + Septa Port

Azeotropic Glassware

RR99922 100ml Azeotropic Reaction Flask, pk 3
RR99920 250ml Azeotropic Reaction Flask, pk 3
RR99939 100ml Tornado Azeotropic Reaction Flask, pk 3
RR99938 250ml Tornado Azeotropic Reaction Flask, pk 3

Liquid & Solid Addition Funnels

RR99049 B14/23 Solid Additions Funnel, pk 3
RR99079 B24/29 Solid Additions Funnel, pk 3
RR99048 B14/23 Liquid Additions Dropping Funnel + Pressure Equalising Arm, pk 3
RR99078 B24/29 Liquid Additions Dropping Funnel + Pressure Equalising Arm, pk 3

Evaporation Adapters, Splash Heads & Evaporation Flasks

RR99045 Rotary Evaporator Adapters Rodaviss B29 Socket to B24 Cone, pk 2
RR99046 Rotary Evaporator Adapters Ordinary B29 Socket to B24 Cone, pk 2
RR99055 Rotary Evaporator Adapters USA 24/40 Socket to B24 Cone, pk 2
RR99083 Splash Head Rodaviss B29 Socket to B24 Cone
RR99084 Splash Head Ordinary B29 Socket to B24 Cone
RR99085 Splash Head USA 24/40 Socket to B24 Cone
RR99053 250ml EZ-2/HT Evaporation Flask (Compatible with Genevac Evaporators), pk 4

Flasks are NOT supplied with reflux tubes or PTFE caps, these must be purchased separately.

Carousel 6 Plus Accessories

Aluminium Inserts

RR99142 Aluminium Insert for 5ml Reaction Flask, pk 6
RR99141 Aluminium Insert for 10ml Reaction Flask, pk 6
RR99140 Aluminium Insert for 25ml Reaction Flask, pk 6
RR99060 Aluminium Insert for 50ml Reaction Flask, pk 6
RR99058 Aluminium Insert for 100ml Reaction Flask, pk 6
RR99057 Aluminium Insert for 170ml Reaction Flask, pk 6

PTFE Magnetic Stirring Bars

RR98075 Cross Shape Stirring Bar 10mm, pk 40
RR98091 Cross Shape Stirring Bar 16.5mm RE, pk 20
RR98096 Elliptical Stirring Bar 10mm RE, pk 40
RR98097 Elliptical Stirring Bar 15mm RE, pk 20
RR99064 Elliptical Stirring Bar 25mm RE, pk 10
RR98070 Octagonal Stirring Bar 13mm, pk 20
RR98071 Pivot Ring Stirring Bar 12 x 6mm, pk 40
RR98095 PTFE Magnetic Stirring Bar Evaluation Kit, pk 30
RR98094 PTFE Magnetic Stirring Bar Retriever 350mm
RR98114 Magnetic Stirring Bar Restrainer

PTFE Caps & Accessories

RR91070 Easy-On PTFE Cap, pk 6
RR91072 Easy-On PTFE Storage Cap, pk 6
RR98076 Silicone Septa for PTFE Caps, pk 100
RR98176 Viton Septa for PTFE Caps, pk 100
RR98060 O-Rings for Caps - Nitrile 24mm, pk 100
RR98160 O-Rings for Caps - Viton 24mm, pk 100

Replacement O-Rings & Quick Release Couplings

RR91060 Nitrile O-Rings 4mm Gas Outlet - Bottom, pk 50
RR91061 Nitrile O-Rings 3mm Gas Outlet - Top, pk 50
RR91062 Viton O-Rings 4mm Gas Outlet - Bottom, pk 50
RR91063 Viton O-Rings 3mm Gas Outlet - Top, pk 50
RR91065 Quick Release Male Body Coupling No Shut-off, pk 2
RR91066 Quick Release Barbed Coupling No Shut-off
RR99062 Quick Release Barbed Coupling + Shut-off, pk 2
RR99063 90° Elbow Quick Release Barbed Coupling + Shut-off, pk 2
RR99065 Quick Release Male Body Coupling + Shut-off, pk 2

Rodaviss Caps & Connecting Sets

RR99051 B14/23 Rodaviss Sealing Cap, pk 10
RR99043 B24/29 Rodaviss Sealing Cap, pk 10
RR99955 B14/23 Rodaviss Connecting Set, pk 10
RR99044 B24/29 Rodaviss Connecting Set, pk 10
RR99080 PTFE/Silicone Septa 20mm - B14/23, pk 50
RR99081 PTFE/Silicone Septa 24.5mm - B19/26, pk 50
RR99082 PTFE/Silicone Septa 29mm - B24/29, pk 50
RR99068 B14/23 Rodaviss Connecting Cap, pk 10
RR99090 B24/29 Rodaviss Connecting Cap, pk 10

Other Accessories

RR98906 Black Lab Marker, pk 10
RR99061 Reaction Flask Support Ring, pk 6
RR99067 Tubing for Inert Gas or Reflux Cooling 2 metres



Cooled Carousel 6 Plus Reaction Station

Cooled Carousel 6 Plus

RR99947 Cooled Carousel 6 Plus (Reservoir, Head, Stand + Cover)

Cooled Carousel 6 Plus Systems

RR99949 Cooled Carousel 6 Plus System 38 - Cooled System - Upgrade
RR99950 Cooled Carousel 6 Plus System 39 - Cooled System - Comprehensive

Cooled Carousel 6 Plus Components

RR99501 Cooled Carousel 6 Plus Cooling Reservoir
RR99948 Cooled Carousel 6 Plus Head
RR99503 Cooled Carousel 6 Plus Stand
RR99515 Cooled Carousel 6 Plus Cover (with gas connectors)

Cooled Carousel 6 Plus Accessories

RR99905 Digital Thermometer (-250°C to +400°C) + 200mm Probe
RR99906 Digital Thermometer (-250°C to +400°C)
RR99907 200mm Temperature Probe
RR99908 Dry Ice Scoop
RR99909 Cold Temperature Apron 1060mm long, Waterproof
RR99910 Protective Face Shield
RR98024 Protective Cold Temperature Gloves
RR71505 Cooling Protection Kit
1 x RR99909 Cold Temperature Apron 1060mm long, Waterproof
1 x RR99910 Protective Face Shield
1 x RR98024 Protective Cold Temperature Gloves

Tornado Plus Overhead Stirring System

Tornado Plus

RR99951 Tornado Plus Overhead Stirring System
RR99230 Universal Support Stand
RR99237 Carousel Temperature Controller with extended 345mm Probe
RR71127 Temp Sensor Support Rod (13mm x 500mm)
RR71120 Support Rod Hotplate Adapter (extension plate)

PTFE Stirring Paddles

RR99240 Centrifugal PTFE Stirrer Paddle, pk 6
RR99241 Centrifugal PTFE Stirrer Paddle, pk 1
RR99244 Anchor PTFE Stirrer Paddle for 100ml Flasks, pk 6
RR99245 Anchor PTFE Stirrer Paddle for 100ml Flasks, pk 1
RR99248 Anchor PTFE Stirrer Paddle for 250ml Flasks, pk 6
RR99249 Anchor PTFE Stirrer Paddle for 250ml Flasks, pk 1
RR99251 Propellor PTFE Stirrer Paddle, pk 6
RR99252 Propellor PTFE Stirrer Paddle, pk 1

RS Overhead Stirrers

Please note that other overhead stirrer options are available on request, please contact Radleys for further information.

RR91302 RS27 Standard Overhead Stirrer 230v UK Plug
RR91302/EURO RS27 Standard Overhead Stirrer 230v Euro Plug
RR91306 RS37 Digital Plus Overhead Stirrer 230v UK Plug
RR91306/EURO RS37 Digital Plus Overhead Stirrer 230v Euro Plug
RR91308 RS50 Control Overhead Stirrer 230v UK Plug
RR91308/EURO RS50 Control Overhead Stirrer 230v Euro Plug
RR91428 Remote Control for RS50 Control
RR91430 RS232 Interface Cable Stirrer-PC

Spare Parts

RR99952 Quick-Thread Stirrer Guide Assembly
RR99953 Replacement Tubing for RR99952 110mm (Stirrer Guide to gas manifold)

Please contact Radleys for details of replacement parts for the Stirrer Guide and Tornado System.

Storm & Breeze Heating/Cooling Work Stations

Storm & Breeze Work Stations

RR96200 Storm Work Station + Carousel 6 PTFE Insulating Plates (M24 hose connections)
RR96210 Breeze Work Station + Integral Stand (M16 hose connections)
RR96220 PTFE Insulating Plates for Carousel 6 Plus

Insulated Hoses

HB6084 Insulated Hose - 100cm long, with M16 thread
HB6085 Insulated Hose - 150cm long, with M16 thread
HB6136 Insulated Hose - 200cm long, with M16 thread
HB6255 Insulated Hose - 300cm long, with M16 thread

HB6784 Insulated Hose - 100cm long, with M24 thread
HB6785 Insulated Hose - 150cm long, with M24 thread
HB6786 Insulated Hose - 200cm long, with M24 thread
HB6787 Insulated Hose - 300cm long, with M24 thread

M16 Hose Adapters & Valves

HB6945 M16 Female to M24 Male Adapter
HB6431 M16 Female to M30 Male Adapter
HB6195 M16 90 Degree Adapter
HB6091 M16 Ball Valve
RR96316 M16 Thread Protection Cap, pk 10

M24 Hose Adapters & Valves

HB6724 M24 Female to M16 Male Adapter
HB6723 M24 Female to M30 Male Adapter
HB9256 M24 90 Degree Adapter
HB9236 M24 Ball Valve
RR96336 M24 Thread Protection Cap, pk 10

M30 Hose Adapters & Valves

HB6454 M30 Female to M16 Male Adapter
HB9268 M30 Female to M24 Male Adapter
HB6461 M30 90 Degree Adapter
HB6451 M30 Ball Valve
RR96348 M30 Thread Protection Cap, pk 10

Thermofluids

HB6164 Silicone Oil -40°C to +165°C - 10 litres
HB6162 Silicone Oil -20°C to +235°C - 10 litres
HB6479 DWTherm -90°C to +200°C - 10 litres

Stirring Hotplates

Tech Stirring Hotplates

RR91202 Carousel Tech Stirring Hotplate 230v UK Plug
RR91202/EURO Carousel Tech Stirring Hotplate 230v Euro Plug
RR91202/JAP Carousel Tech Stirring Hotplate 110v Japanese Plug
RR91202/SWISS Carousel Tech Stirring Hotplate 240v Swiss Plug
RR91202/USA Carousel Tech Stirring Hotplate 115v US Plug

Advanced Stirring Hotplates

RR91204 Carousel Advanced Stirring Hotplate 230v UK Plug
RR91204/EURO Carousel Advanced Stirring Hotplate 230v Euro Plug
RR91204/JAP Carousel Advanced Stirring Hotplate 100v Japanese Plug
RR91204/SWISS Carousel Advanced Stirring Hotplate 230v Swiss Plug
RR91204/USA Carousel Advanced Stirring Hotplate 115v US Plug

Other Stirring Hotplate models are available on request...

Temperature Controllers & Sensors

RR91210 Carousel Temperature Controller
Includes RR71125 Temp Sensor Support Rod and RR71120 Support Rod Hotplate Adapter
RR91226 Pt1000 S/S Sensor for Carousel Advanced Stirring Hotplate
RR91227 Pt1000 Glass Coated Sensor for Carousel Advanced Stirring Hotplate
RR91228 Temperature Sensor Holder
RR91229 Temp Sensor Support Rod (13mm x 425mm)
RR71127 Temp Sensor Support Rod (13mm x 500mm)
RR71125 Temp Sensor Support Rod (13mm x 340mm)
RR71120 Support Rod Hotplate Adapter (extension plate)
RR91234 RS232 Interface Cable - 15 Pin to 9 Pin

Improving the productivity of your chemistry...

Radleys specialise in supplying innovative chemistry tools for scientists, allowing them to undertake their research faster and more effectively...

We have been manufacturing scientific glassware and laboratory instruments for over 45 years and our customers include leading industrial and academic research facilities around the world. In the rapidly changing world of science and chemistry, we work hard to respond to the needs of our customers by investing in new product development that will allow them to remain at the forefront of chemistry research. Our specific areas of expertise are focused on equipment for chemical synthesis, process development, work-up and evaporation.

Visit www.radleys.com to see our full range of chemistry productivity tools...



Product Guide Volume 6

Innovative tools for chemical synthesis, process development, work-up and evaporation...



Carousel 12 Plus Reaction Station

Simultaneously heats/cools, stirs and refluxes multiple samples under an inert atmosphere...



Reactor-Ready Lab Reactors

Innovative, patented, low cost, reaction work stations for glass vessels from 100ml to 5 litres...



Control Software & Data Hub

Datalog and control multiple devices including stirrers, circulators, balances, pumps and temperature sensors...



RS Overhead Stirrers

Choice of three models; offering the best mixing results, even for challenging applications...



Carousel Stirring Hotplates

Choice of three models; all offering improved safety, ease of use and faster heat-up times...



Shire Hill, Saffron Walden,
Essex, CB11 3AZ. United Kingdom.
t: +44-(0)1799-513320
f: +44-(0)1799-513283
e: sales@radleys.co.uk